



A Catholic Patron Body

LEARNING OPPORTUNITIES FOR STUDENTS  
VALUES  
STAFF  
PEACE  
WISDOM  
DIGNITY  
WITNESS  
CARE  
TRUTH AND MEANING  
SOCIAL JUSTICE  
VALUE BASED  
RICH CONGREGATIONAL HERITAGE  
PROTECTION OF THE ENVIRONMENT  
RESPONSES TO STUDENT NEEDS  
VALUES  
STUDENTS  
CARE  
EMPOWERING YOUNG PEOPLE  
TRANSFORMATION  
PASTORAL CARE  
PROMOTES UNDERSTANDING OF SOCIAL ISSUES  
CONTRIBUTES FULLY AND ACTIVELY TO SOCIETY

Le Chéile  
Schools Trust

Scan here to express your  
preference for a Le Chéile  
School in your area.



# Table of Content

03

.....  
The Principles of a Le Chéile School

04

.....  
The Le Chéile Crest

05

.....  
The Le Chéile Prayer

06

.....  
Le Chéile Timeline

10

.....  
Values of a Le Chéile School

12

.....  
How to Express Your Preference

# LE CHÉILE SCHOOLS

Le Chéile schools are committed to the promotion of a value-based education built on the shared purpose of:

## Welcome

Our **welcome** recognises the unique dignity and worth of each person building on the Catholic tradition of being inclusive.

## Wisdom

Our pursuit of **wisdom** and knowledge enables our students to achieve an academic excellence that supports them in understanding the world and seeking to improve it.

## Witness

Le Chéile Schools **witness** to the Gospel values of Inclusivity, Truth, Forgiveness, Service, Concern, Spirituality, Teaching and Learning on a daily basis. We recognise that every person is made in the image and likeness of God.





# THE LE CHÉILE CREST

## Inspiration:

The design imagery is inspired by the ornamental stones and patterns from the Book of Kells.

The **interlocking keys** symbolise that education gives access to and opens up new knowledge and possibilities.



**Togetherness** is symbolised by the different pathways into a central maze, where there is searching, challenges and new directions.

**St. Brigid's Cross** symbolises our Celtic Catholic roots and traditions.



# THE LE CHÉILE PRAYER

In the power of the Spirit  
and in keeping with the traditions of our  
founding Congregations  
we pray that, for students, teachers  
and parents alike;  
our schools may be places of learning and  
discovery,  
places of hope and joy,  
places of courage and confidence,  
places of gratitude and generosity,  
places of faith rooted in love.  
We make this prayer through Christ our Lord,

**Amen**





# LE CHÉILE

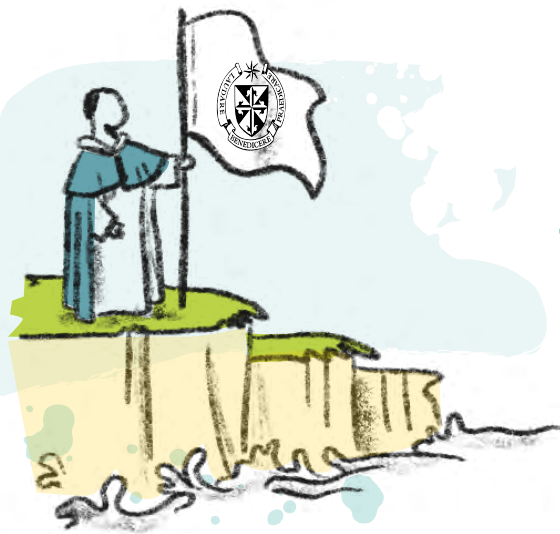
Continuing the tradition of  
value-based education in Ireland

## Le Chéile Congregations & Education

*From 500 AD  
– 1800s*

### ● MONASTERIES

run by monks  
had some of the  
first schools in  
Ireland. They were  
celebrated all over  
Europe in the  
Middle Ages and  
Ireland became  
known as the  
Land of Saints and  
Scholars.



*1644*

- **THE DOMINICAN ORDER** arrived in Galway, having been founded by Spaniard Saint Dominic de Guzman in France in 1206.

*1771*

### ● THE URSULINE

**SISTERS** came to Ireland, having been founded by Saint Angela Merici in Northern Italy in 1535.

*1600*

*From 500 AD  
– 1800s*

- **BARDIC SCHOOLS** were schools in which poetry, history, and general Irish literature were taught. Some were for law, and some for other special professions. They were lay schools.

*1700*

*1695 – 1729*

- **PENAL LAWS** – The Catholic educational system was outlawed. As a result, Catholic church services operated under extreme secrecy.

● *1695 – Mid 18<sup>th</sup> century*

**HEDGE SCHOOLS** – Catholic education and culture were kept alive by secret open-air masses and illegal outdoor schools known as 'hedge schools'.

All the Le Chéile Religious Congregations were founded to provide a value based education. The values underpinning the educational philosophy of our schools lead to wide curriculum, co-curriculum and extra-curricular provision ensuring that all students can flourish and reach their full potential.







**1808**

**THE PATRICIAN BROTHERS**

founded in Tullow,  
Co. Carlow



**1859**

**SISTERS OF SAINT**

**LOUIS** opened in  
Monaghan. Founded  
in 1842 by Louis  
Bautain and Mère  
Thérèse de la Croix in  
France.

**1842**

**FAITHFUL COMPANIONS  
OF JESUS (FCJ)**

opened in Oughterard.  
Founded in 1820 by Marie  
Madeleine d'Houet in Paris.

**1800**



**1829**

**CATHOLIC EMANCIPATION**, which  
provided freedom from discrimination  
for Catholics in Ireland and the UK.

**1793**

**THE ROMAN CATHOLIC RELIEF ACT**,  
allowing for the exercise of religion and  
the existence of Catholic schools.

**1860**



**1831**

**NATIONAL SCHOOL SYSTEM**  
was set up.

The four principles of Catholic Education particularly embraced by the Congregations of the Le Chéile Schools Trust are: Inclusion, care for the most vulnerable, promotion of the unique gifts of each student and the integration of faith and culture.



# Religious Orders & Education

**1864**

## THE SISTERS OF ST. JOSEPH OF CLUNY

came to Ireland.  
Founded in 1807 by Anne Marie Javouhey in France.

**1867**

## HOLY FAITH SISTERS

were established by Margaret Aylward in Dublin.

**1880**

## THE DE LA SALLE BROTHERS

came to Waterford.  
Founded in 1684 by John Baptist De La Salle in France.

**1878**

## THE SISTERS OF THE CROSS AND PASSION

came to Kilcullen.  
Founded in 1854 by Elizabeth Prout in England.

**1903**

## SISTERS OF CHARITY OF ST. PAUL

opened a school in Kilfinane, Co. Limerick.  
Founded in 1847 by Genevieve Dupuis in Birmingham, England.

# Politics & Society

**1860**

**1879**

**INTERMEDIATE EDUCATION ACTS** setting up secondary schools in Ireland.

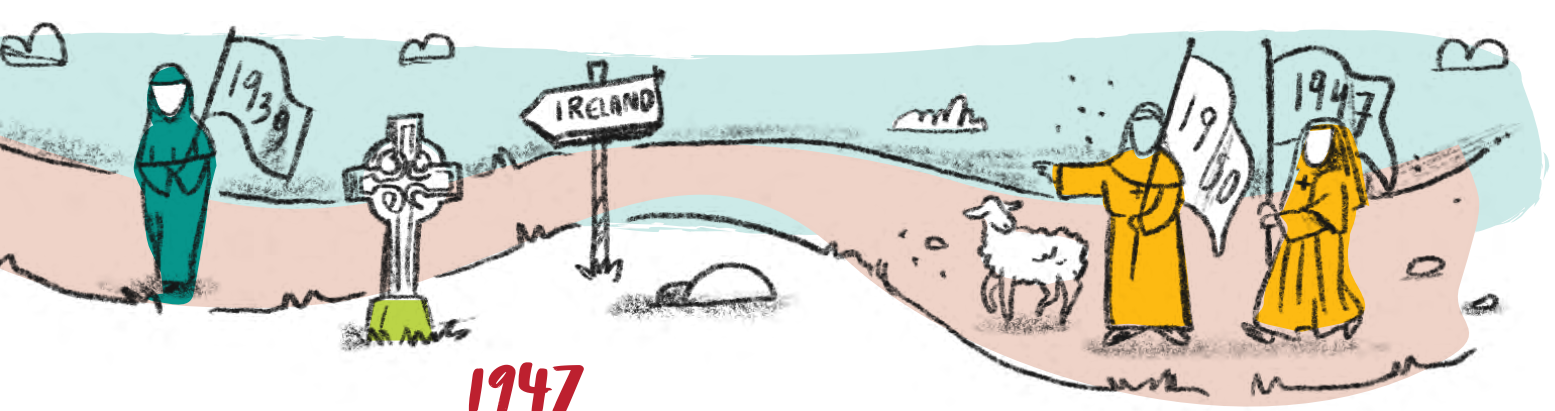
**1900**



A common characteristic of all the congregations, gifted to Le Chéile Schools Trust is their welcome for the poor, those with additional learning needs and those who are victims of violence, injustice and social inequality.

**Our 21st Century Catholic Schools express our unique and rich heritage by promoting student centred practices and policies in all our schools.**





**1947**

**THE HOLY CHILD JESUS**

**SISTERS** set up a school in Killiney. Founded in 1884 by American woman Cornelia Connelly in England.

**1939**

**THE POOR SERVANTS OF THE MOTHER OF GOD**

established a school in Carrigtwohill. Founded in 1869 by Frances Margaret Taylor in London.

**1950s**

**THE RELIGIOUS OF CHRISTIAN EDUCATION**

opened two schools. Founded in 1817 by Father Louis Lafosse and four women in Normandy, France.

**1955**

**THE ORDER OF THE RELIGIOUS OF JESUS AND MARY**

came to Ireland. Founded in 1818 by Claudine Thevenet in France.

**1967**

**THE MARIANISTS**

founded by Blessed William Joseph Chaminade came to Loughlinstown in Dublin, Ireland.

**1930**

**VOCATIONAL SCHOOLS** (now community colleges under the ETBs) were established to provide a technical education.

**1967**

Introduction of **FREE SECONDARY EDUCATION** in Ireland.

**2000**

**2014**

Le Chéile Secondary School opened in Tyrrelstown. The first Catholic School to open in Ireland under the Trust structure.

The Le Chéile Schools Trust continues to build on the heritage of our founding congregations by opening new schools throughout Ireland in response to parental and community choice.

Le Chéile Schools Trust is run by lay people, in partnership with the Department of Education and Skills. We provide school buildings and resource our schools. The Trust supports professional development opportunities for staff, students, parents and guardians and Boards of Management.



**2008**

**LE CHÉILE SCHOOLS TRUST WAS ESTABLISHED.**

Originally twelve religious congregations handed over the leadership of their schools to the Le Chéile Schools Trust.



# Values of a LE CHÉILE SCHOOL

## Inclusivity

Le Chéile Schools are places of welcome. This welcome is expressed through inclusive curricula, excellence in pedagogy, and strong anti-bullying policies.



## Truth

Le Chéile Schools promote good judgement and decision making among our students. In our schools research skills are honed, debate is encouraged, and experience is reflected on.



## Concern

Care is at the heart of what we do in Le Chéile Schools. We are concerned for the wellbeing of all members of our school community. Christian concern is empowering and enabling.



## Spirituality

Le Chéile Schools are faith friendly spaces. We encourage young people to explore the concepts of belief and unbelief, we trust them in their exploration. Students are exposed to a variety of ways to pray and to reflect, including - but not exclusively - Catholic practices.





## Forgiveness

At the heart of the message of Jesus is forgiveness and the ability to start again with those who hurt you. We seek to be kind and forgiving to each other, knowing that this will make each of us more hopeful, optimistic and compassionate.



## Service

Members of Le Chéile School communities serve one another. Our leadership is one of giving a hand up. Love always trumps ego in our schools.



## Teaching and Learning

In Le Chéile Schools we all teach and we all learn. We push the boundaries of excellence in pedagogy, learning environment, assessment and progression to 3rd level.





# HOW TO EXPRESS YOUR PREFERENCE

Express your preference for a Le Chéile Secondary School in your area by voting on the Department of Education and Skills Website.



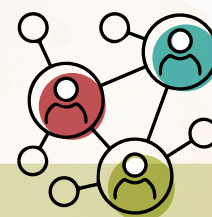
<https://patronage.education.gov.ie/survey-list.aspx>



*Tradition  
and Vision*



*In the community,  
of the community,  
for the community*



*21<sup>st</sup> Century  
Educational  
philosophy*



We are the patrons of **54** Voluntary Secondary Schools, **10** Primary Schools and **9** Community Schools spread throughout the country."